

Residence 01

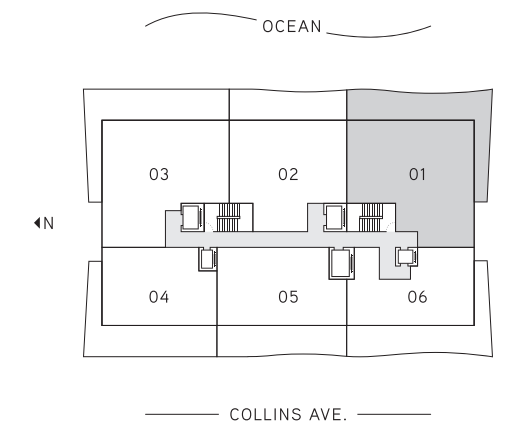
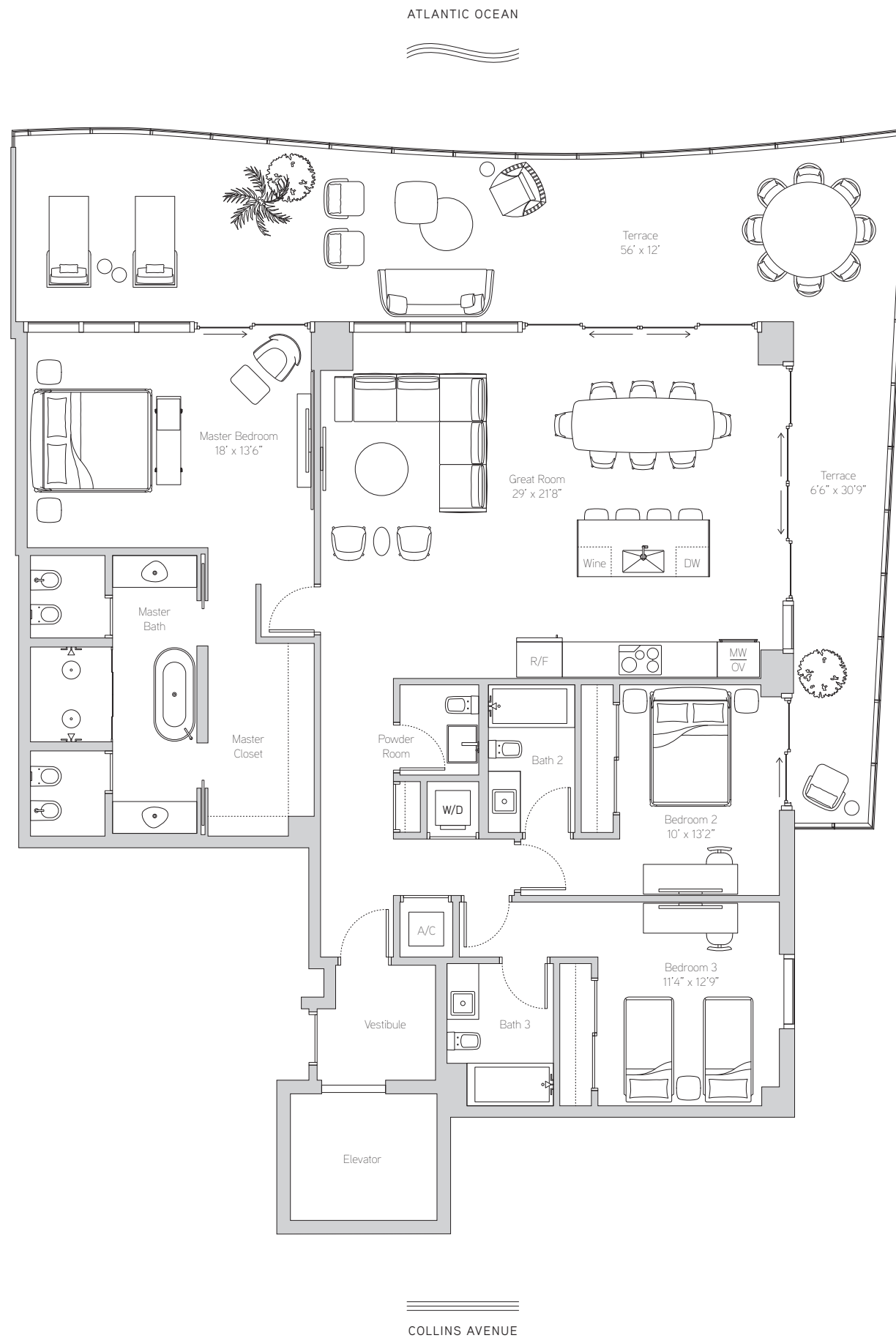
Floors 4-7

3 Bedrooms  
3.5 Bathrooms

*Interior*  
2,104 ft<sup>2</sup> / 195 m<sup>2</sup>

*Exterior*  
801 ft<sup>2</sup> / 74 m<sup>2</sup>

*Total*  
2,905 ft<sup>2</sup> / 270 m<sup>2</sup>



Stated square footages and dimensions are measured to the exterior boundaries of the exterior walls and the centerline of interior demising walls and in fact vary from the square footage and dimensions that would be determined by using the description and definition of the "Unit" set forth in the Declaration (which generally only includes the interior airspace between the perimeter walls and excludes all interior structural components and other common elements). For your reference, the area of the Unit, determined in accordance with these defined unit boundaries, is as set forth on Exhibit "3" to the Declaration of Condominium contained in the Prospectus. Measurements of rooms set forth on this floor plan are generally taken at the farthest points of each given room (as if the room were a perfect rectangle), without regard for any cutouts or variations. Accordingly, the area of the actual room will typically be smaller than the product obtained by multiplying the stated length and width. All dimensions are estimates which will vary with actual construction, and all floor plans, specifications and other development plans are subject to change and will not necessarily accurately reflect the final plans and specifications for the development. All depictions of appliances, counters, soffits, floor coverings, furniture and other matters of detail, including, without limitation, items of finish and decoration, are conceptual only and are not necessarily included in each Unit. ORAL REPRESENTATIONS CANNOT BE RELIED UPON AS CORRECTLY STATING THE REPRESENTATIONS OF THE DEVELOPER. FOR CORRECT REPRESENTATIONS, REFERENCE SHOULD BE MADE TO THE DOCUMENTS REQUIRED BY SECTION 718.503, FLORIDA STATUTES, TO BE FURNISHED BY A DEVELOPER TO A BUYER OR LESSEE. These materials are not intended to be an offer to sell, or solicitation to buy a unit in the condominium. FOR NY RESIDENTS ONLY, SEE CPS-12 OFFERING PLAN FOR ADDITIONAL TERMS. FILE NO. CP18-0139. **Floor plan not to scale.**



## Residence 02

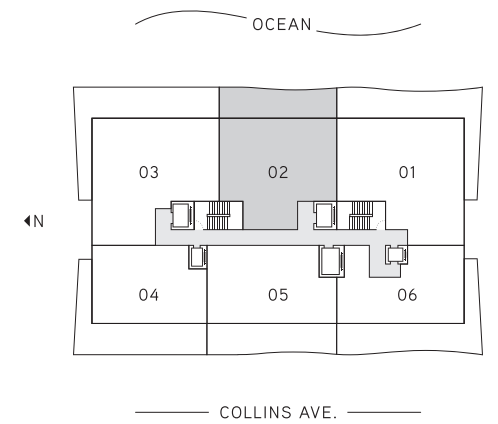
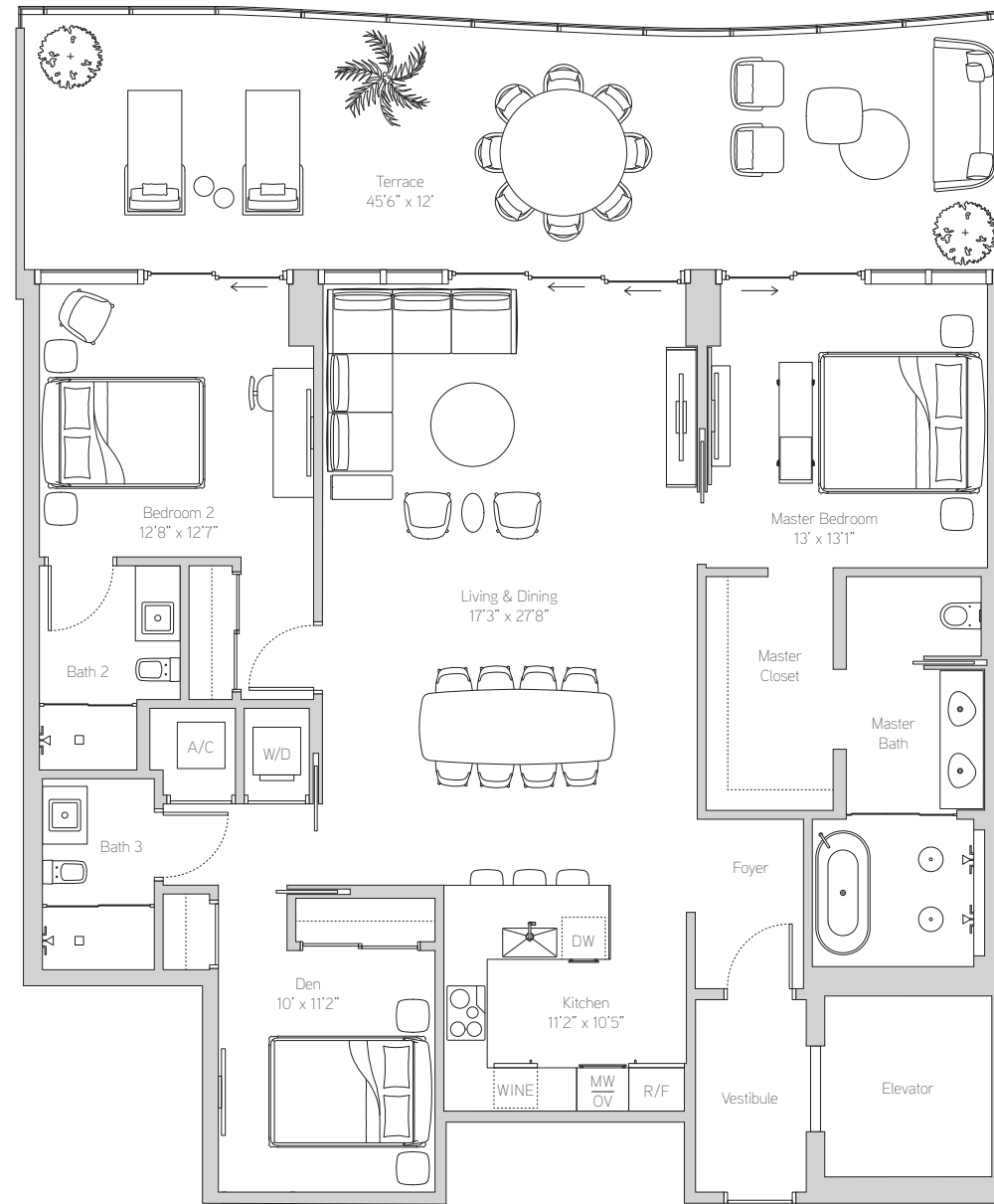
Floors 3-18

2 Bedrooms + Den  
3 Bathrooms

*Interior*  
1,748 ft<sup>2</sup> / 162 m<sup>2</sup>

*Exterior*  
520 ft<sup>2</sup> / 48 m<sup>2</sup>

*Total*  
2,268 ft<sup>2</sup> / 210 m<sup>2</sup>





## Residence 03

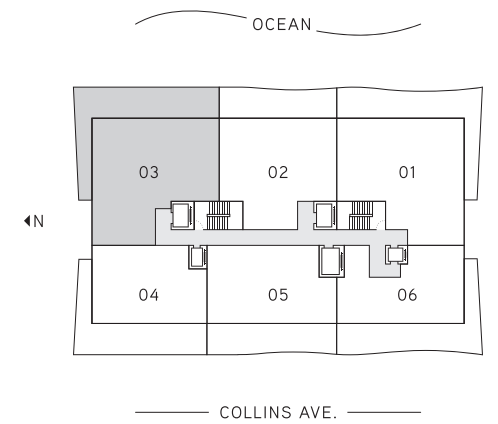
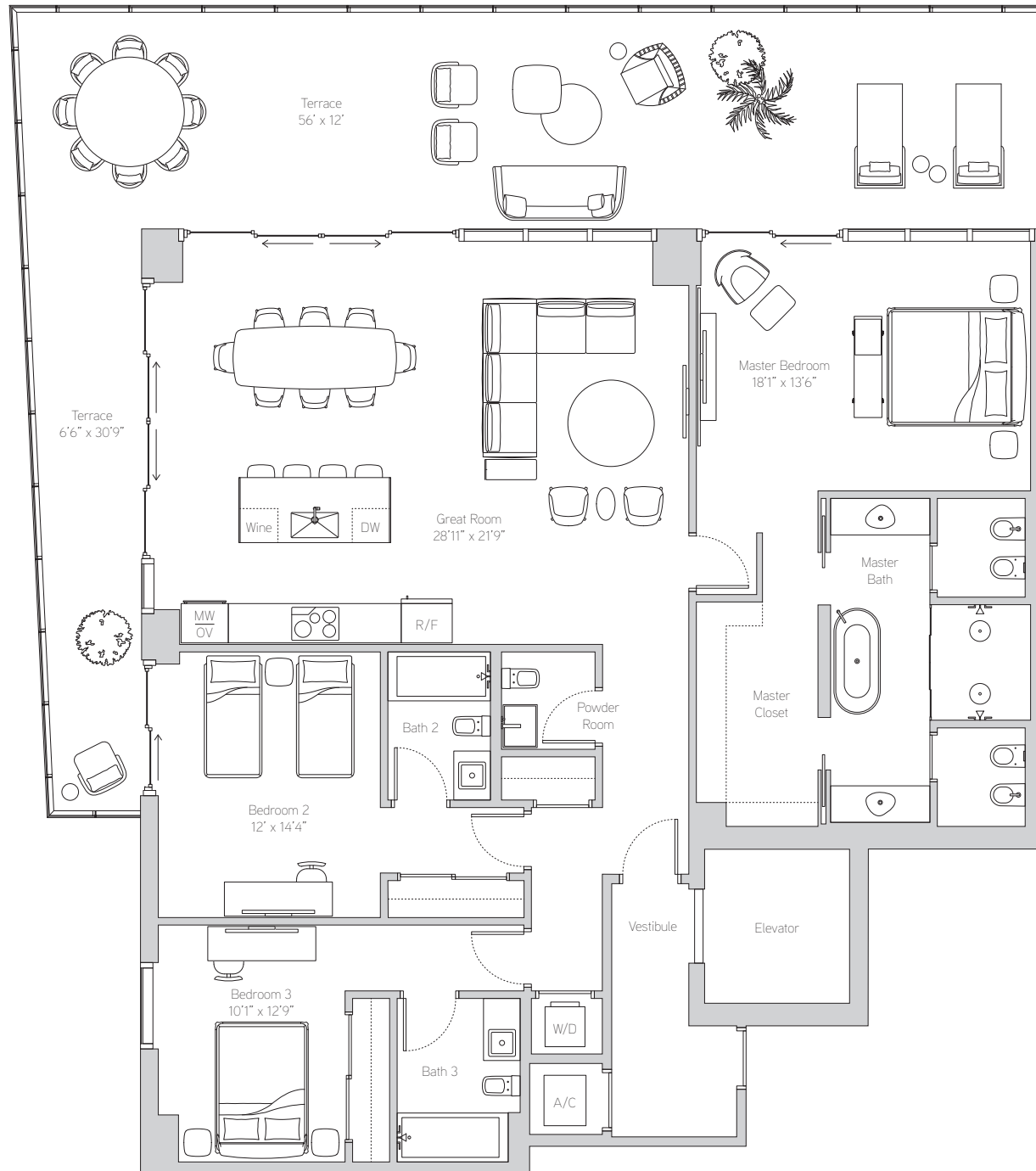
Floors 4-7

3 Bedrooms  
3.5 Bathrooms

*Interior*  
2,153 ft<sup>2</sup> / 200 m<sup>2</sup>

*Exterior*  
846 ft<sup>2</sup> / 79 m<sup>2</sup>

*Total*  
2,999 ft<sup>2</sup> / 279 m<sup>2</sup>





## Residence 04

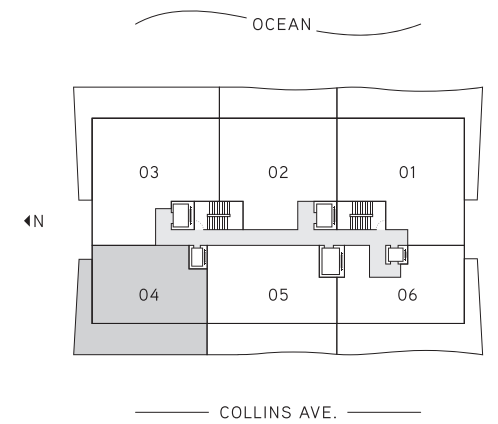
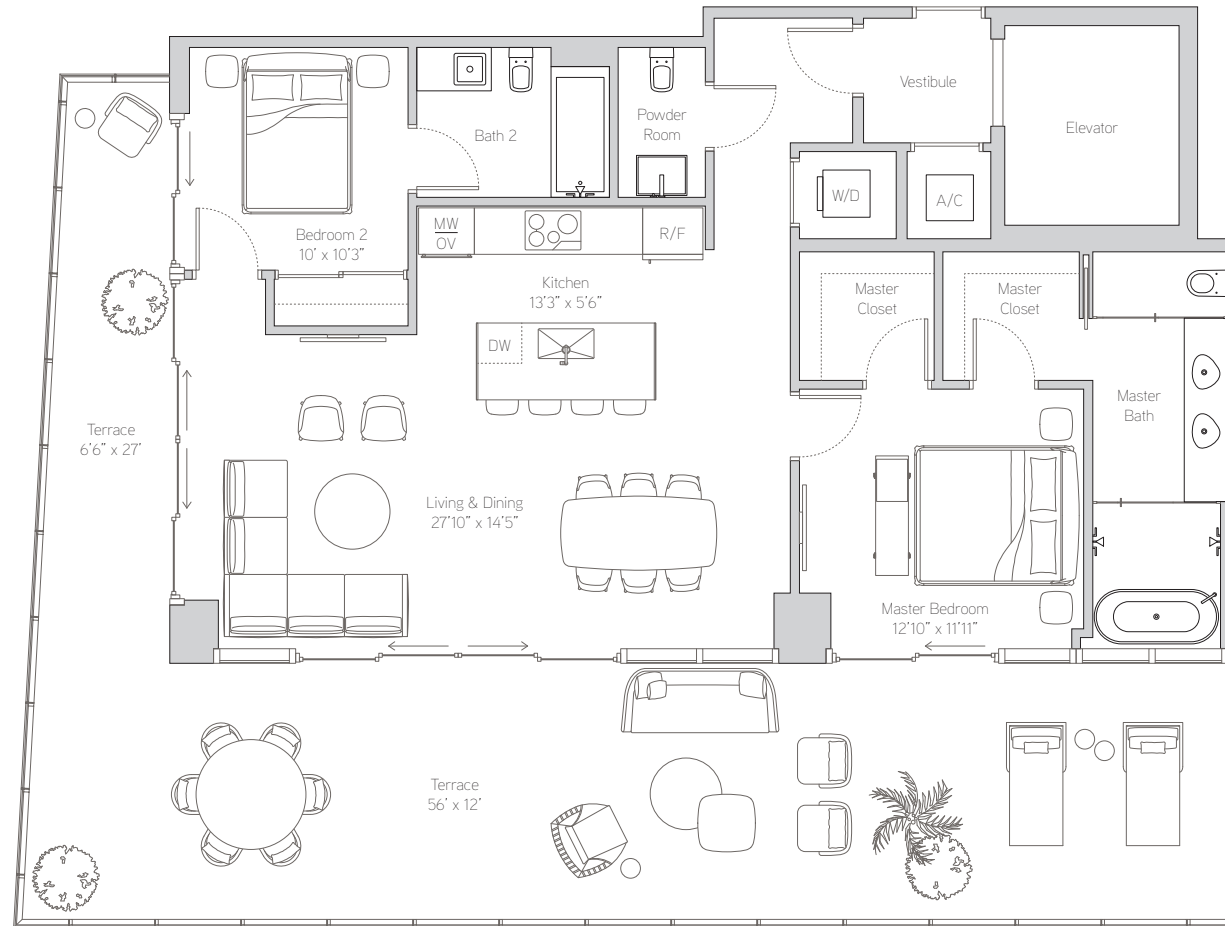
Floors 4-7

2 Bedrooms  
2.5 Bathrooms

*Interior*  
1,321 ft<sup>2</sup> / 123 m<sup>2</sup>

*Exterior*  
822 ft<sup>2</sup> / 76 m<sup>2</sup>

*Total*  
2,143 ft<sup>2</sup> / 199 m<sup>2</sup>





## Residence 05

Floors 4-18

2 Bedrooms

2.5 Bathrooms

*Interior*

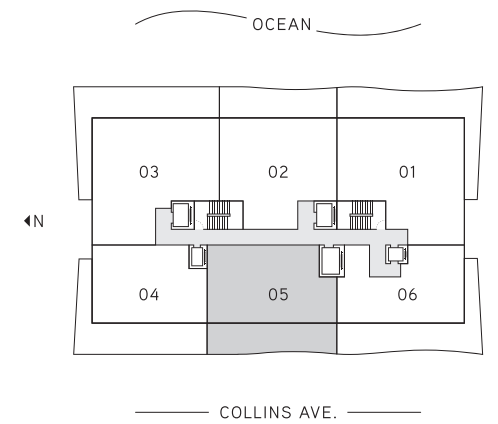
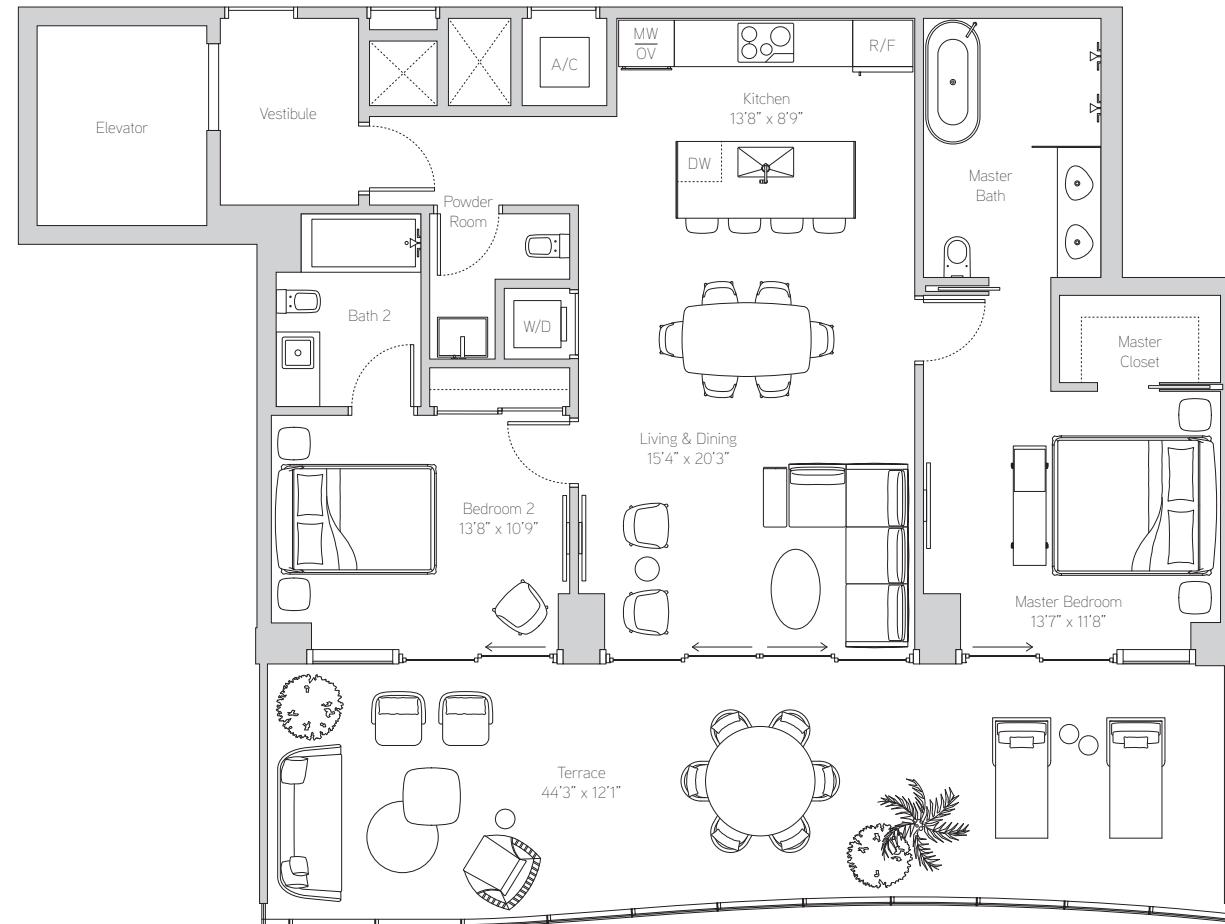
1,245 ft<sup>2</sup> / 116 m<sup>2</sup>

*Exterior*

509 ft<sup>2</sup> / 47 m<sup>2</sup>

*Total*

1,754 ft<sup>2</sup> / 163 m<sup>2</sup>





## Residence 06

Floors 4-7

2 Bedrooms

2.5 Bathrooms

*Interior*

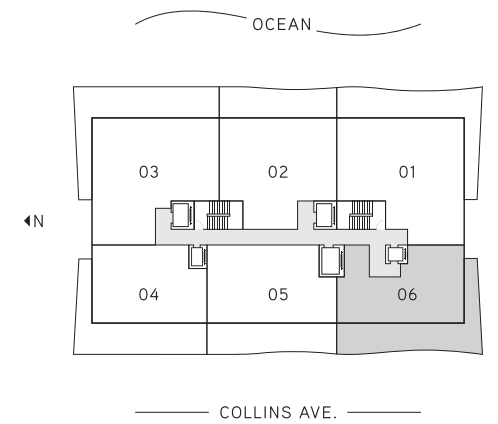
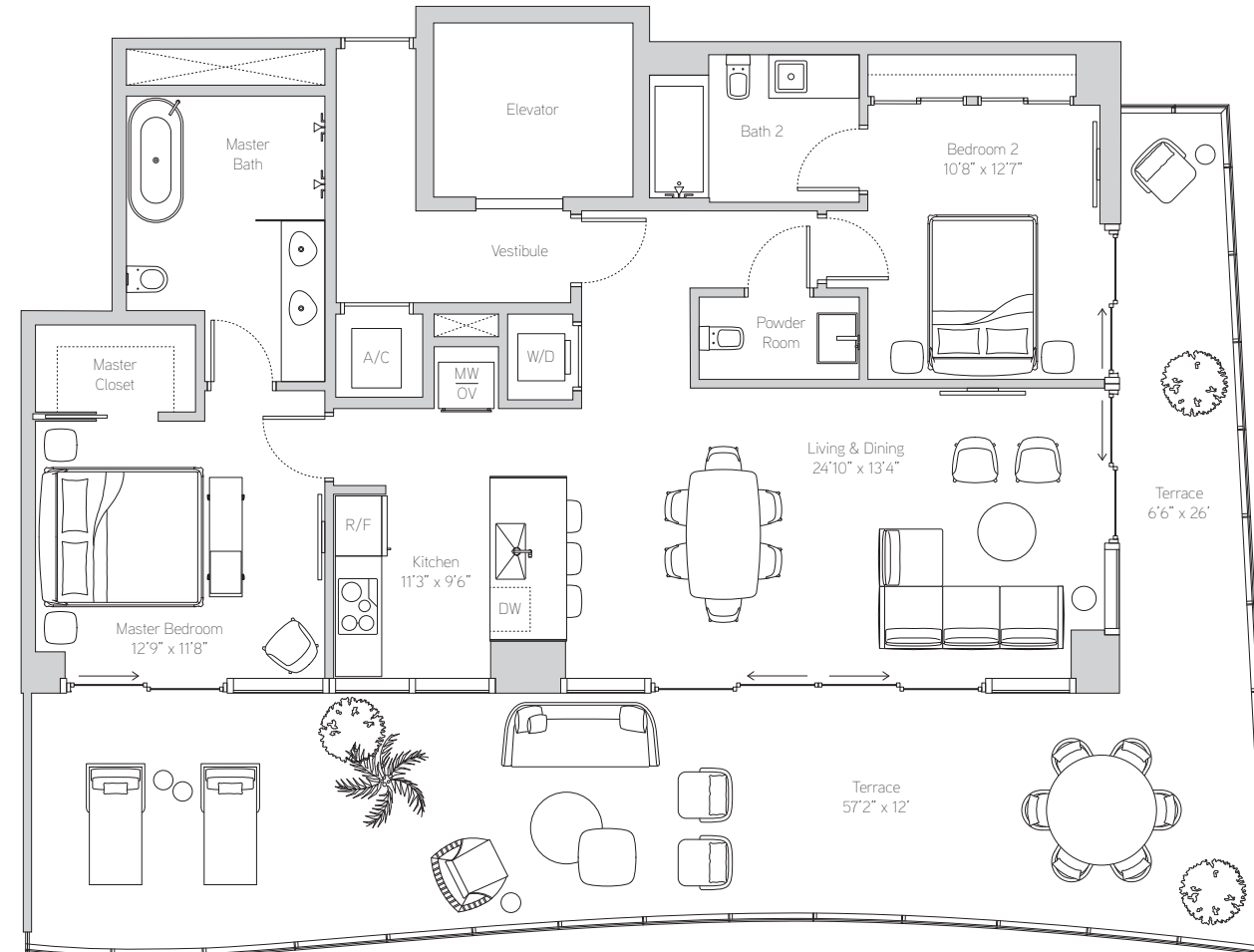
1,363 ft<sup>2</sup> / 127 m<sup>2</sup>

*Exterior*

787 ft<sup>2</sup> / 73 m<sup>2</sup>

*Total*

2,150 ft<sup>2</sup> / 200 m<sup>2</sup>



Beach House South

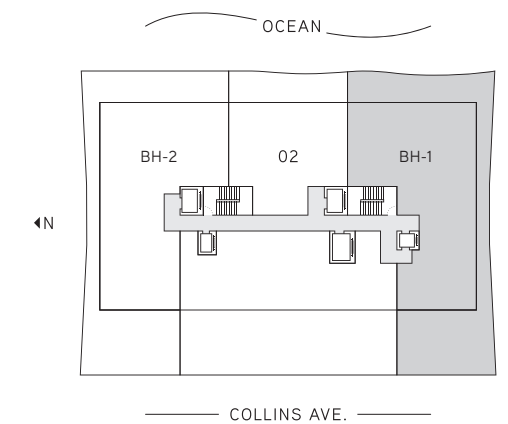
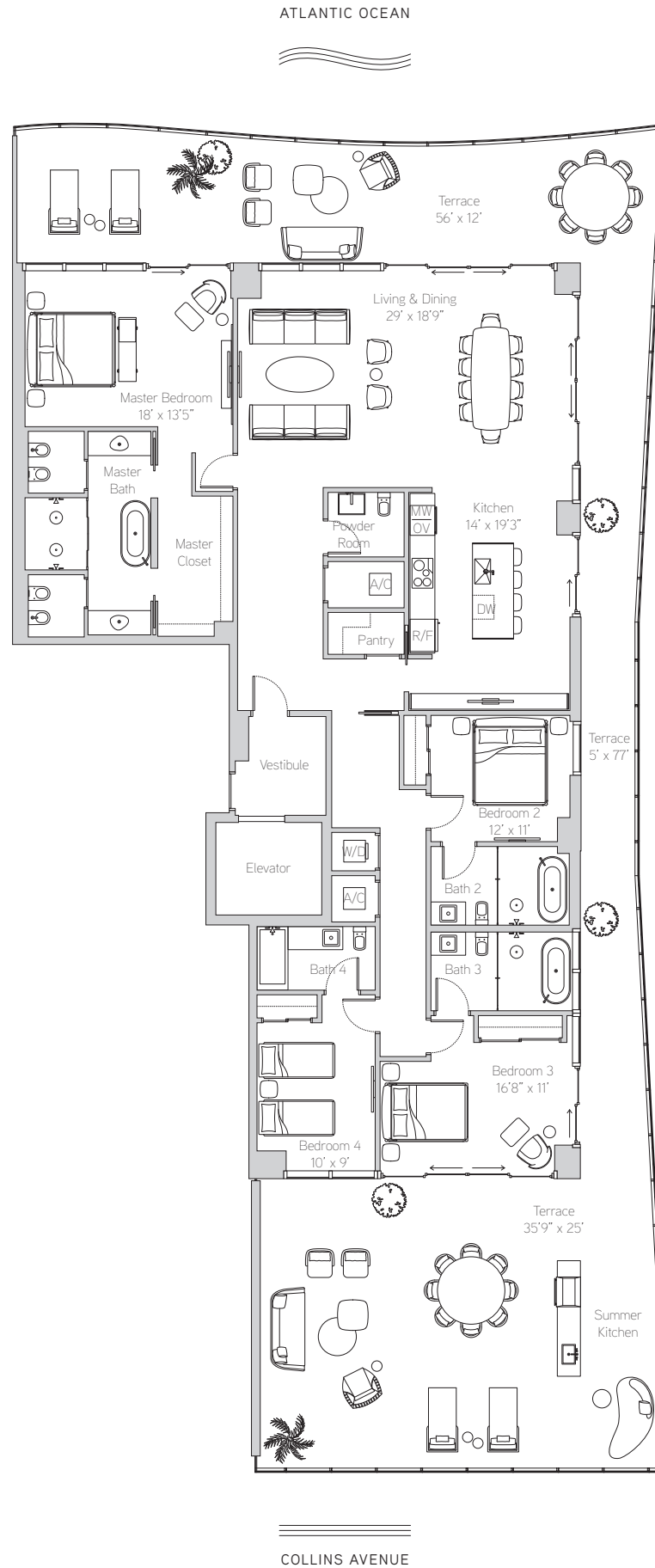
Floor 3

4 Bedrooms  
4.5 Bathrooms

*Interior*  
2,904 ft<sup>2</sup> / 270 m<sup>2</sup>

*Exterior*  
1,943 ft<sup>2</sup> / 181 m<sup>2</sup>

*Total*  
4,847 ft<sup>2</sup> / 450 m<sup>2</sup>



Stated square footages and dimensions are measured to the exterior boundaries of the exterior walls and the centerline of interior demising walls and in fact vary from the square footage and dimensions that would be determined by using the description and definition of the "Unit" set forth in the Declaration (which generally only includes the interior airspace between the perimeter walls and excludes all interior structural components and other common elements). For your reference, the area of the Unit, determined in accordance with these defined unit boundaries, is as set forth on Exhibit "3" to the Declaration of Condominium contained in the Prospectus. Measurements of rooms set forth on this floor plan are generally taken at the farthest points of each given room (as if the room were a perfect rectangle), without regard for any cutouts or variations. Accordingly, the area of the actual room will typically be smaller than the product obtained by multiplying the stated length and width. All dimensions are estimates which will vary with actual construction, and all floor plans, specifications and other development plans are subject to change and will not necessarily accurately reflect the final plans and specifications for the development. All depictions of appliances, counters, soffits, floor coverings, furniture and other matters of detail, including, without limitation, items of finish and decoration, are conceptual only and are not necessarily included in each Unit. ORAL REPRESENTATIONS CANNOT BE RELIED UPON AS CORRECTLY STATING THE REPRESENTATIONS OF THE DEVELOPER. FOR CORRECT REPRESENTATIONS, REFERENCE SHOULD BE MADE TO THE DOCUMENTS REQUIRED BY SECTION 718.503, FLORIDA STATUTES, TO BE FURNISHED BY A DEVELOPER TO A BUYER OR LESSEE. These materials are not intended to be an offer to sell, or solicitation to buy a unit in the condominium. FOR NY RESIDENTS ONLY, SEE CPS-12 OFFERING PLAN FOR ADDITIONAL TERMS. FILE NO. CP18-0139. *Floor plan not to scale.*

Beach House North

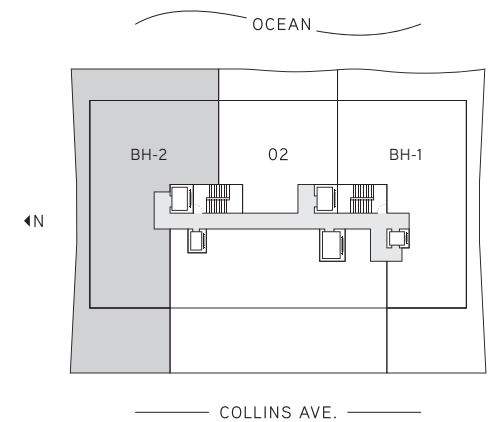
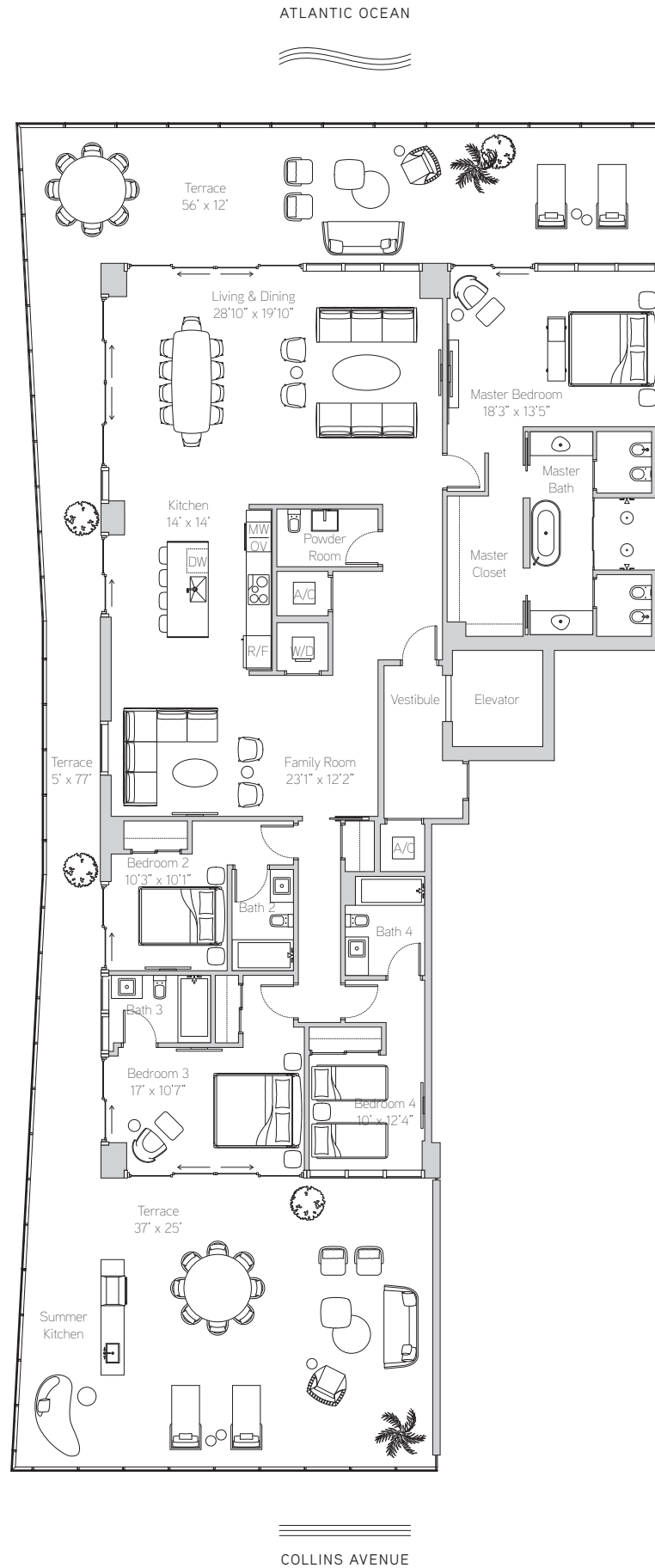
Floor 3

4 Bedrooms  
4.5 Bathrooms

*Interior*  
2,963 ft<sup>2</sup> / 275 m<sup>2</sup>

*Exterior*  
2,014 ft<sup>2</sup> / 187 m<sup>2</sup>

*Total*  
4,977 ft<sup>2</sup> / 462 m<sup>2</sup>



Stated square footages and dimensions are measured to the exterior boundaries of the exterior walls and the centerline of interior demising walls and in fact vary from the square footage and dimensions that would be determined by using the description and definition of the "Unit" set forth in the Declaration (which generally only includes the interior airspace between the perimeter walls and excludes all interior structural components and other common elements). For your reference, the area of the Unit, determined in accordance with these defined unit boundaries, is as set forth on Exhibit "3" to the Declaration of Condominium contained in the Prospectus. Measurements of rooms set forth on this floor plan are generally taken at the farthest points of each given room (as if the room were a perfect rectangle), without regard for any cutouts or variations. Accordingly, the area of the actual room will typically be smaller than the product obtained by multiplying the stated length and width. All dimensions are estimates which will vary with actual construction, and all floor plans, specifications and other development plans are subject to change and will not necessarily accurately reflect the final plans and specifications for the development. All depictions of appliances, counters, soffits, floor coverings, furniture and other matters of detail, including, without limitation, items of finish and decoration, are conceptual only and are not necessarily included in each Unit. ORAL REPRESENTATIONS CANNOT BE RELIED UPON AS CORRECTLY STATING THE REPRESENTATIONS OF THE DEVELOPER. FOR CORRECT REPRESENTATIONS, REFERENCE SHOULD BE MADE TO THE DOCUMENTS REQUIRED BY SECTION 718.503, FLORIDA STATUTES, TO BE FURNISHED BY A DEVELOPER TO A BUYER OR LESSEE. These materials are not intended to be an offer to sell, or solicitation to buy a unit in the condominium. FOR NY RESIDENTS ONLY, SEE CPS-12 OFFERING PLAN FOR ADDITIONAL TERMS. FILE NO. CP18-0139. *Floor plan not to scale.*



Sky Residence South

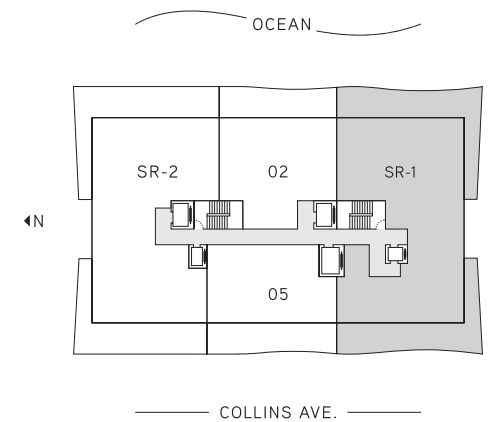
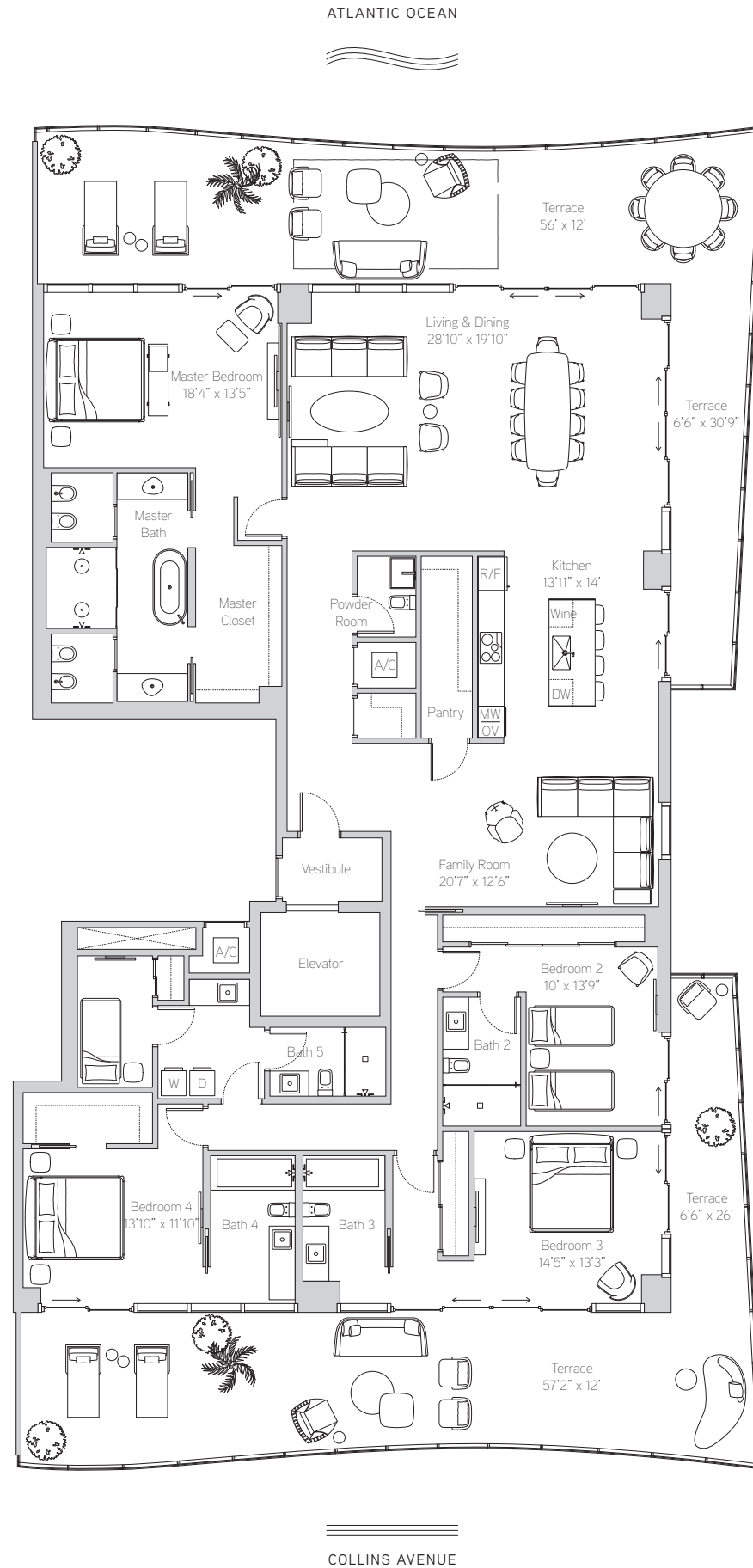
Floors 8-18

4 Bedrooms  
5.5 Bathrooms

*Interior*  
3,443 ft<sup>2</sup> / 320 m<sup>2</sup>

*Exterior*  
1,581 ft<sup>2</sup> / 147 m<sup>2</sup>

*Total*  
5,024 ft<sup>2</sup> / 467 m<sup>2</sup>



Stated square footages and dimensions are measured to the exterior boundaries of the exterior walls and the centerline of interior demising walls and in fact vary from the square footage and dimensions that would be determined by using the description and definition of the "Unit" set forth in the Declaration (which generally only includes the interior airspace between the perimeter walls and excludes all interior structural components and other common elements). For your reference, the area of the Unit, determined in accordance with these defined unit boundaries, is as set forth on Exhibit "3" to the Declaration of Condominium contained in the Prospectus. Measurements of rooms set forth on this floor plan are generally taken at the farthest points of each given room (as if the room were a perfect rectangle), without regard for any cutouts or variations. Accordingly, the area of the actual room will typically be smaller than the product obtained by multiplying the stated length and width. All dimensions are estimates which will vary with actual construction, and all floor plans, specifications and other development plans are subject to change and will not necessarily accurately reflect the final plans and specifications for the development. All depictions of appliances, counters, soffits, floor coverings, furniture and other matters of detail, including, without limitation, items of finish and decoration, are conceptual only and are not necessarily included in each Unit. ORAL REPRESENTATIONS CANNOT BE RELIED UPON AS CORRECTLY STATING THE REPRESENTATIONS OF THE DEVELOPER. FOR CORRECT REPRESENTATIONS, REFERENCE SHOULD BE MADE TO THE DOCUMENTS REQUIRED BY SECTION 718.503, FLORIDA STATUTES, TO BE FURNISHED BY A DEVELOPER TO A BUYER OR LESSEE. These materials are not intended to be an offer to sell, or solicitation to buy a unit in the condominium. FOR NY RESIDENTS ONLY, SEE CPS-12 OFFERING PLAN FOR ADDITIONAL TERMS. FILE NO. CP18-0139. *Floor plan not to scale.*

Sky Residence North

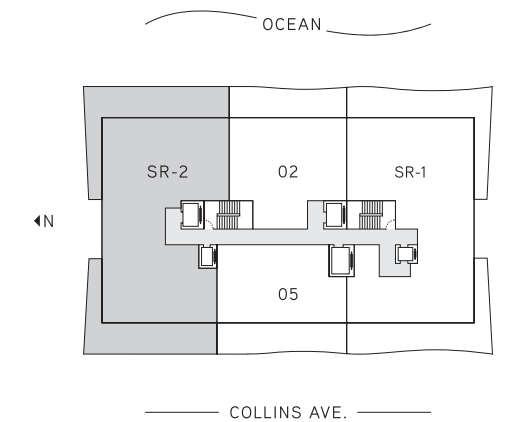
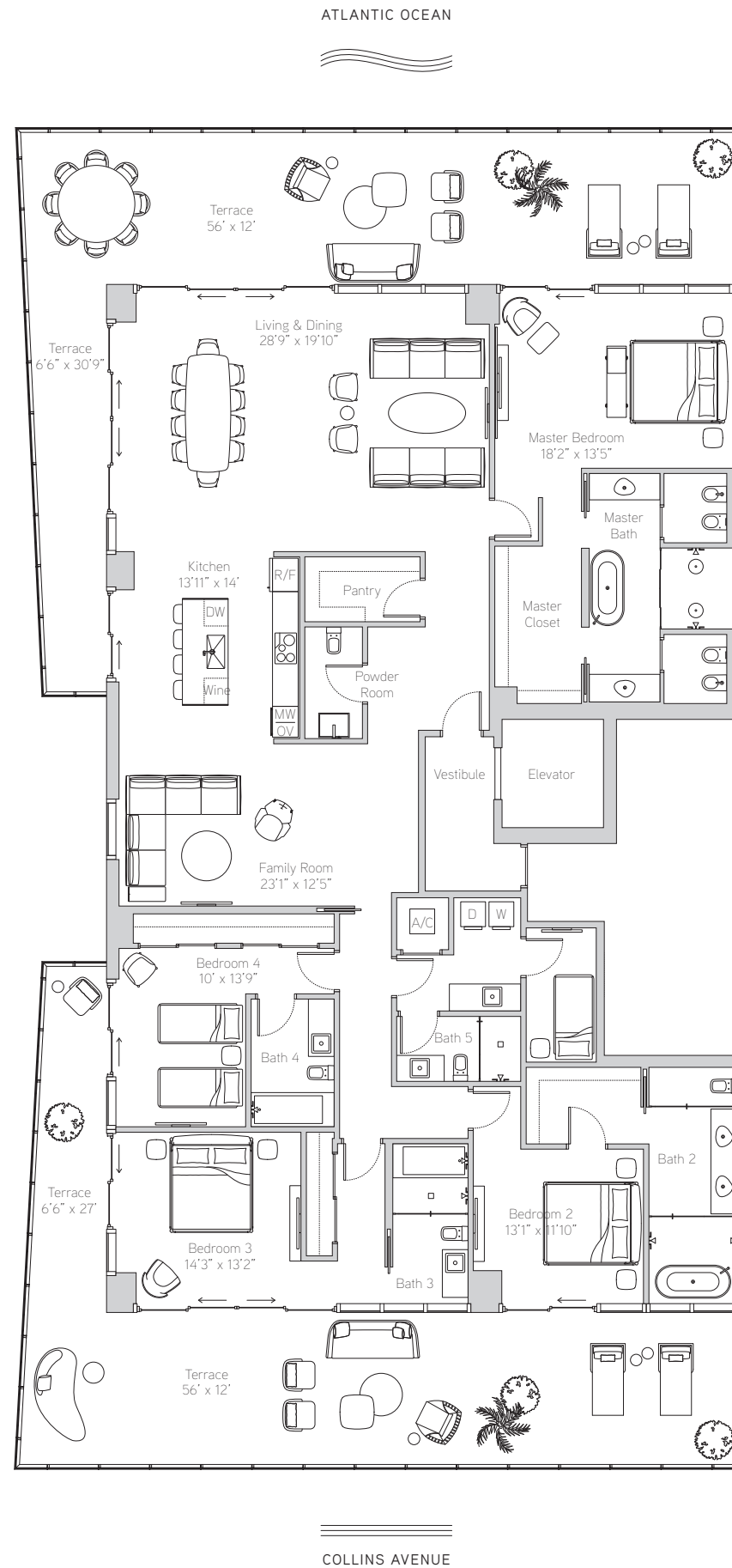
Floors 8-18

4 Bedrooms  
5.5 Bathrooms

*Interior*  
3,474 ft<sup>2</sup> / 323 m<sup>2</sup>

*Exterior*  
1,661 ft<sup>2</sup> / 154 m<sup>2</sup>

*Total*  
5,135 ft<sup>2</sup> / 477 m<sup>2</sup>



Stated square footages and dimensions are measured to the exterior boundaries of the exterior walls and the centerline of interior demising walls and in fact vary from the square footage and dimensions that would be determined by using the description and definition of the "Unit" set forth in the Declaration (which generally only includes the interior airspace between the perimeter walls and excludes all interior structural components and other common elements). For your reference, the area of the Unit, determined in accordance with these defined unit boundaries, is as set forth on Exhibit "3" to the Declaration of Condominium contained in the Prospectus. Measurements of rooms set forth on this floor plan are generally taken at the farthest points of each given room (as if the room were a perfect rectangle), without regard for any cutouts or variations. Accordingly, the area of the actual room will typically be smaller than the product obtained by multiplying the stated length and width. All dimensions are estimates which will vary with actual construction, and all floor plans, specifications and other development plans are subject to change and will not necessarily accurately reflect the final plans and specifications for the development. All depictions of appliances, counters, soffits, floor coverings, furniture and other matters of detail, including, without limitation, items of finish and decoration, are conceptual only and are not necessarily included in each Unit. ORAL REPRESENTATIONS CANNOT BE RELIED UPON AS CORRECTLY STATING THE REPRESENTATIONS OF THE DEVELOPER. FOR CORRECT REPRESENTATIONS, REFERENCE SHOULD BE MADE TO THE DOCUMENTS REQUIRED BY SECTION 718.503, FLORIDA STATUTES, TO BE FURNISHED BY A DEVELOPER TO A BUYER OR LESSEE. These materials are not intended to be an offer to sell, or solicitation to buy a unit in the condominium. FOR NY RESIDENTS ONLY, SEE CPS-12 OFFERING PLAN FOR ADDITIONAL TERMS. FILE NO. CP18-0139. *Floor plan not to scale.*

## Penthouse South

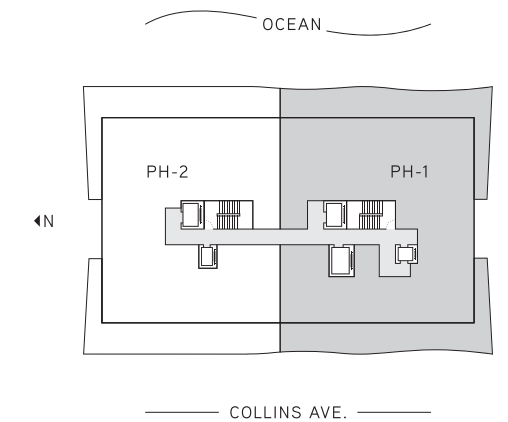
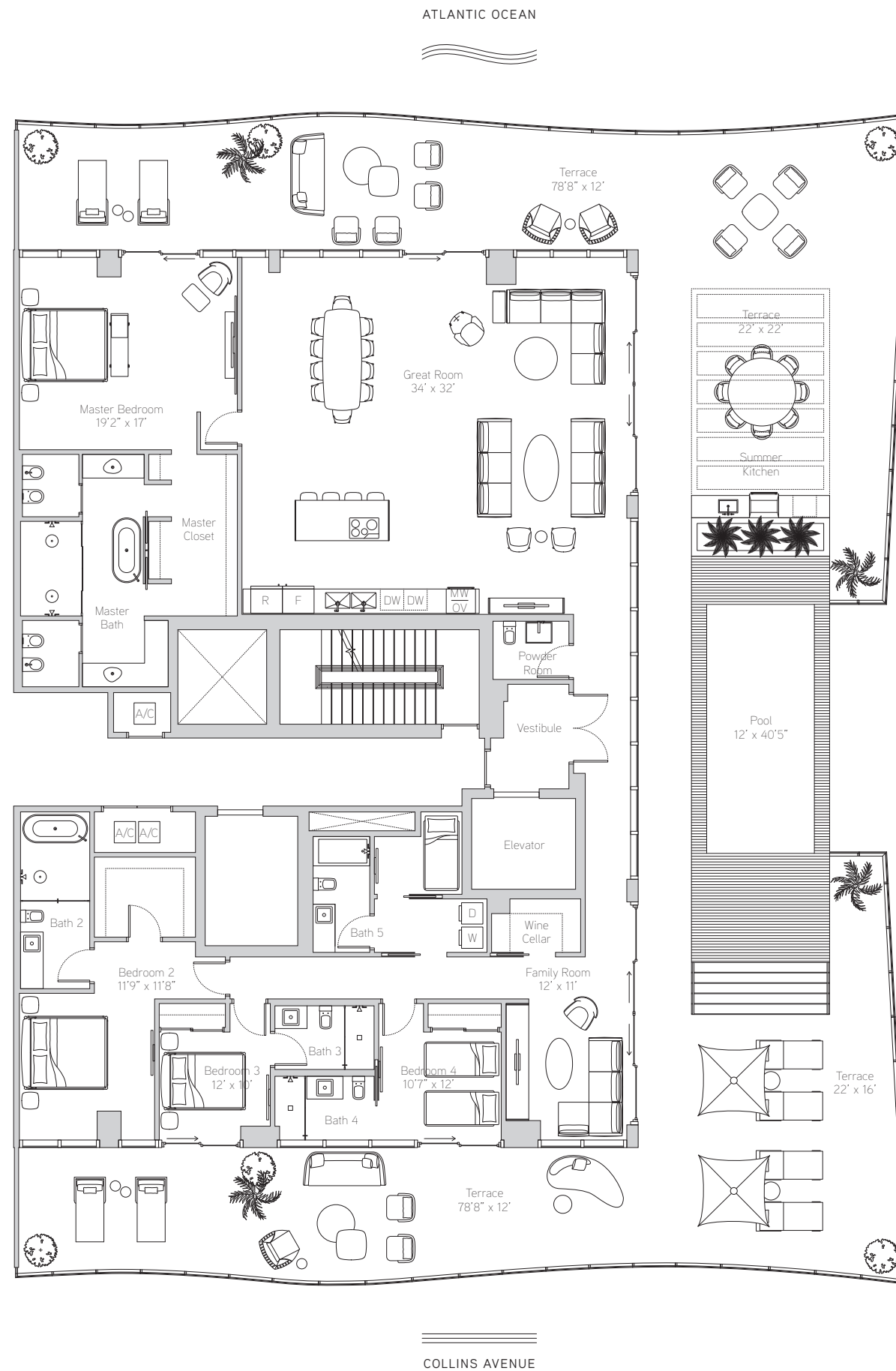
Floor 19

4 Bedrooms  
5.5 Bathrooms

*Interior*  
3,523 ft<sup>2</sup> / 327 m<sup>2</sup>

*Exterior*  
3,406 ft<sup>2</sup> / 316 m<sup>2</sup>

*Total*  
6,929 ft<sup>2</sup> / 644 m<sup>2</sup>



## Penthouse North

Floor 19

4 Bedrooms

5.5 Bathrooms

Interior

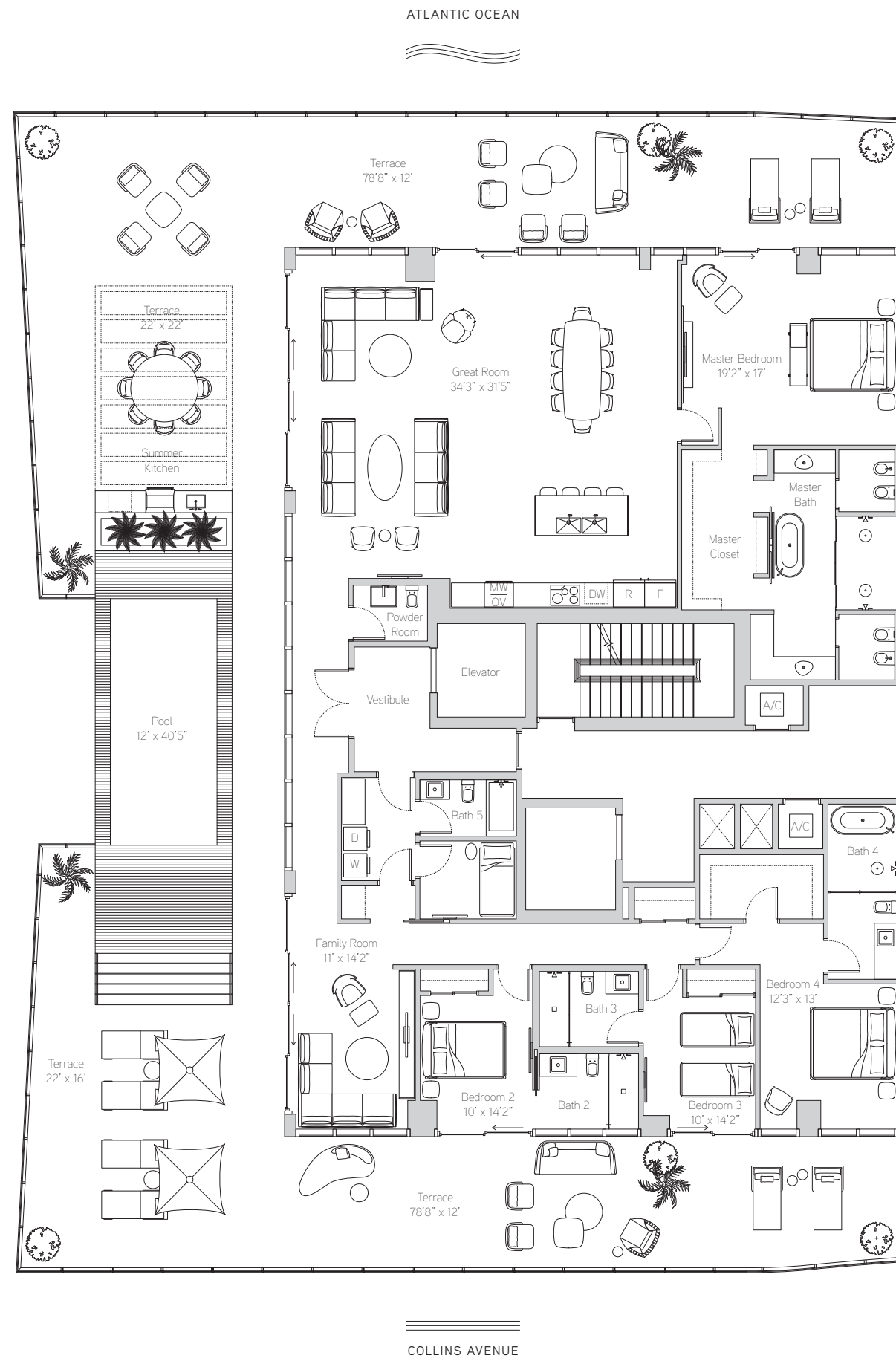
3,623 ft<sup>2</sup> / 337 m<sup>2</sup>

Exterior

3,529 ft<sup>2</sup> / 328 m<sup>2</sup>

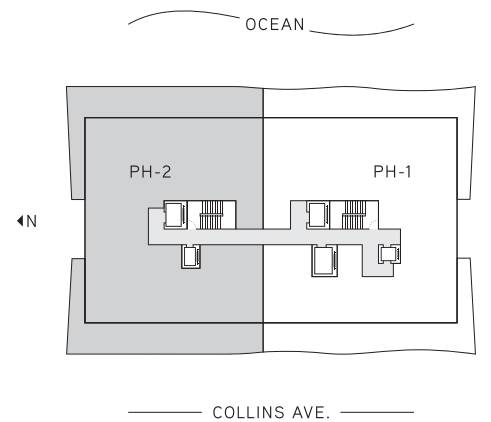
Total

7,152 ft<sup>2</sup> / 664 m<sup>2</sup>



ATLANTIC OCEAN

COLLINS AVENUE



Stated square footages and dimensions are measured to the exterior boundaries of the exterior walls and the centerline of interior demising walls and in fact vary from the square footage and dimensions that would be determined by using the description and definition of the "Unit" set forth in the Declaration (which generally only includes the interior airspace between the perimeter walls and excludes all interior structural components and other common elements). For your reference, the area of the Unit, determined in accordance with these defined unit boundaries, is as set forth on Exhibit "3" to the Declaration of Condominium contained in the Prospectus. Measurements of rooms set forth on this floor plan are generally taken at the farthest points of each given room (as if the room were a perfect rectangle), without regard for any cutouts or variations. Accordingly, the area of the actual room will typically be smaller than the product obtained by multiplying the stated length and width. All dimensions are estimates which will vary with actual construction, and all floor plans, specifications and other development plans are subject to change and will not necessarily accurately reflect the final plans and specifications for the development. All depictions of appliances, counters, soffits, floor coverings, furniture and other matters of detail, including, without limitation, items of finish and decoration, are conceptual only and are not necessarily included in each Unit. ORAL REPRESENTATIONS CANNOT BE RELIED UPON AS CORRECTLY STATING THE REPRESENTATIONS OF THE DEVELOPER. FOR CORRECT REPRESENTATIONS, REFERENCE SHOULD BE MADE TO THE DOCUMENTS REQUIRED BY SECTION 718.503, FLORIDA STATUTES, TO BE FURNISHED BY A DEVELOPER TO A BUYER OR LESSEE. These materials are not intended to be an offer to sell, or solicitation to buy a unit in the condominium. FOR NY RESIDENTS ONLY, SEE CPS-12 OFFERING PLAN FOR ADDITIONAL TERMS. FILE NO. CP18-0139. **Floor plan not to scale.**

## Penthouse Duplex

Floors 18-19

5 Bedrooms  
6.5 Bathrooms

*Interior*  
5,627 ft<sup>2</sup> / 522 m<sup>2</sup>

*Exterior*  
4,207 ft<sup>2</sup> / 390 m<sup>2</sup>

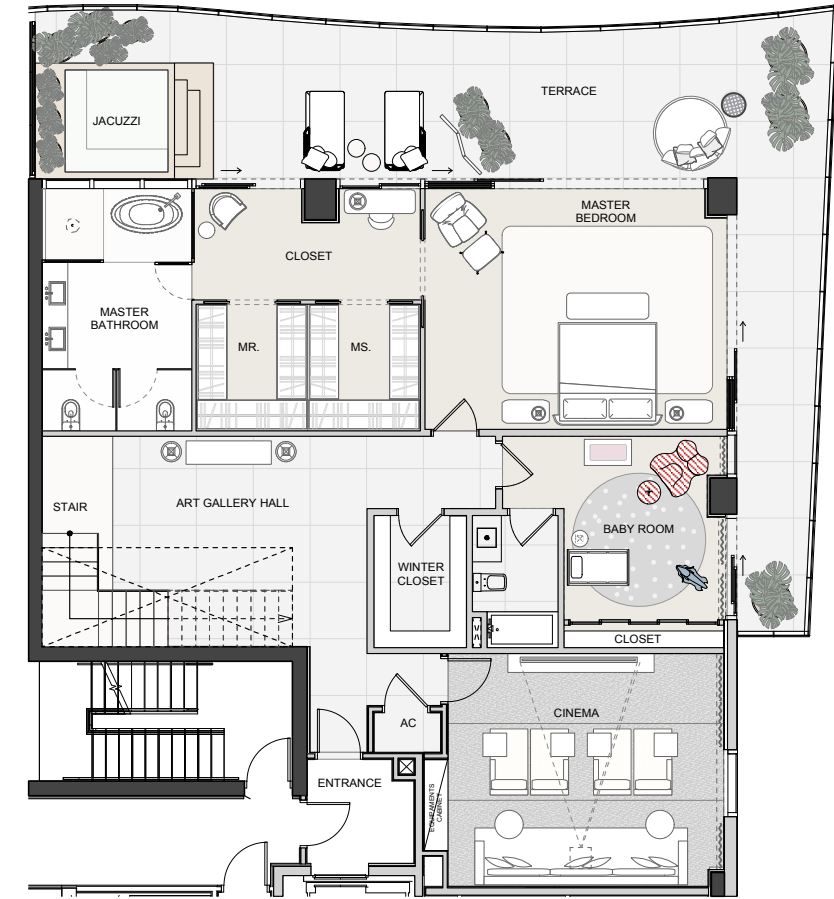
*Total*  
9,834 ft<sup>2</sup> / 912 m<sup>2</sup>

UPPER LEVEL

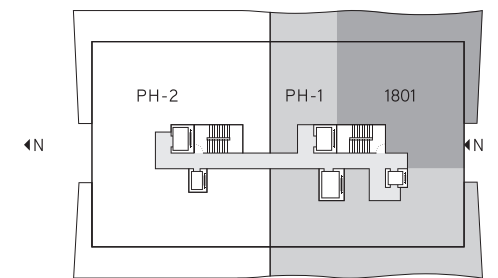


COLLINS AVENUE

LOWER LEVEL



OCEAN



COLLINS AVE.